

Jeff Nolen #1





JEFF NOLAN #2

Jeff Nolen #3





Jeff Nelder #4

Search for a place or address

Favorites

See All



Home Add

Work Add

Add

Jeff Nelson
AS



237th St

2000th Ave

2000th Ave

30th St

1691

79°

AQI 36

200

JEFF NOLAN #10





*Carlyle
Cemetery*

*You can't do anything about
the length of your life,
but you can do something
about its width and depth.*

*Erected in 1988 by Manley Monuments
in memory of Dean Manley.*

COLLINS

DUNCAN

- maintaining a registry of groundwater contamination hazard advisories within their respective region;
- facilitating informational and educational activities relating to groundwater protection; and
- recommending to the Agency that regional protection is needed for a specific area within the region.

The Illinois EPA has established four Priority Groundwater Protection Planning Regions and designated the associated committees. Figure 6 illustrates these areas.

Figure 6. Regional Groundwater Protection Planning Committee Regions

Legend

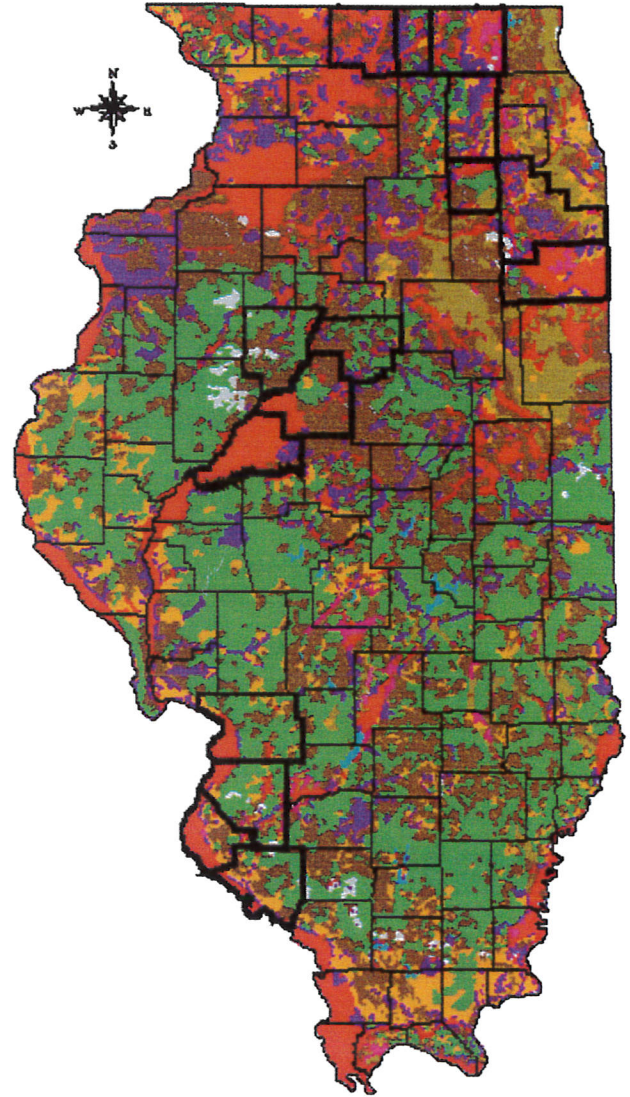
- Planning Committee Regions
- County Boundaries

Potential for Aquifer Recharge

- Very High
- Very High to High
- High to Moderately High
- Moderately High to Moderate
- Moderate to Moderately Low
- Moderately Low to Low
- Low
- Water
- Disturbed Land

Source Information

Modified from Keefer & Berg
 1990 Potential for Aquifer Recharge
 in Illinois (Appropriate Recharge Areas).
 Map and County Boundaries
 obtained from the ISGS.



Prioritization of Watersheds

Prioritization criteria in Table 9 are then applied to the identified groundwater. Full use support means that no contaminants have been detected. Partial minor means concentrations were detected at less than 50% of the groundwater quality standard. Partial moderate means concentrations were detected at more than 50% of the groundwater quality standard.

Table 9. Prioritization Criteria for Groundwater

Priority	Criteria
Priority 1	<ul style="list-style-type: none"> • All wells using unconfined aquifers in Priority Groundwater Protection Planning Regions (Full Use Support, Partial Minor and Moderate)

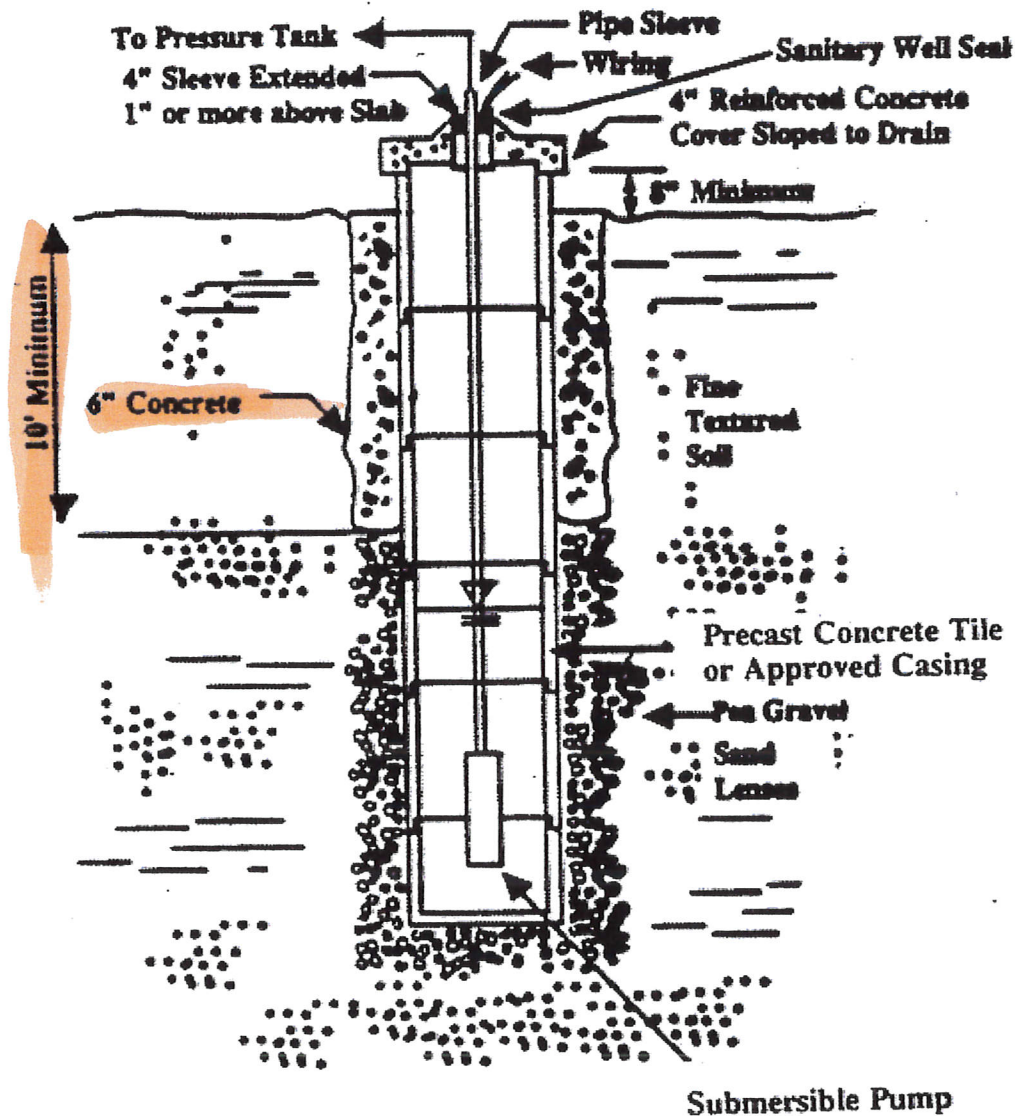
Jeff Nolen #8

Joint Committee on Administrative Rules

ADMINISTRATIVE CODE

TITLE 77: PUBLIC HEALTH
 CHAPTER I: DEPARTMENT OF PUBLIC HEALTH
 SUBCHAPTER r: WATER AND SEWAGE
 PART 920 WATER WELL CONSTRUCTION CODE
 SECTION 920.ILLUSTRATION G BORED OR DUG WELL – WELL NOT FINISHED
 WITH BURIED SLAB

Section 920.ILLUSTRATION G Bored or Dug Well – Well Not Finished With Buried Slab



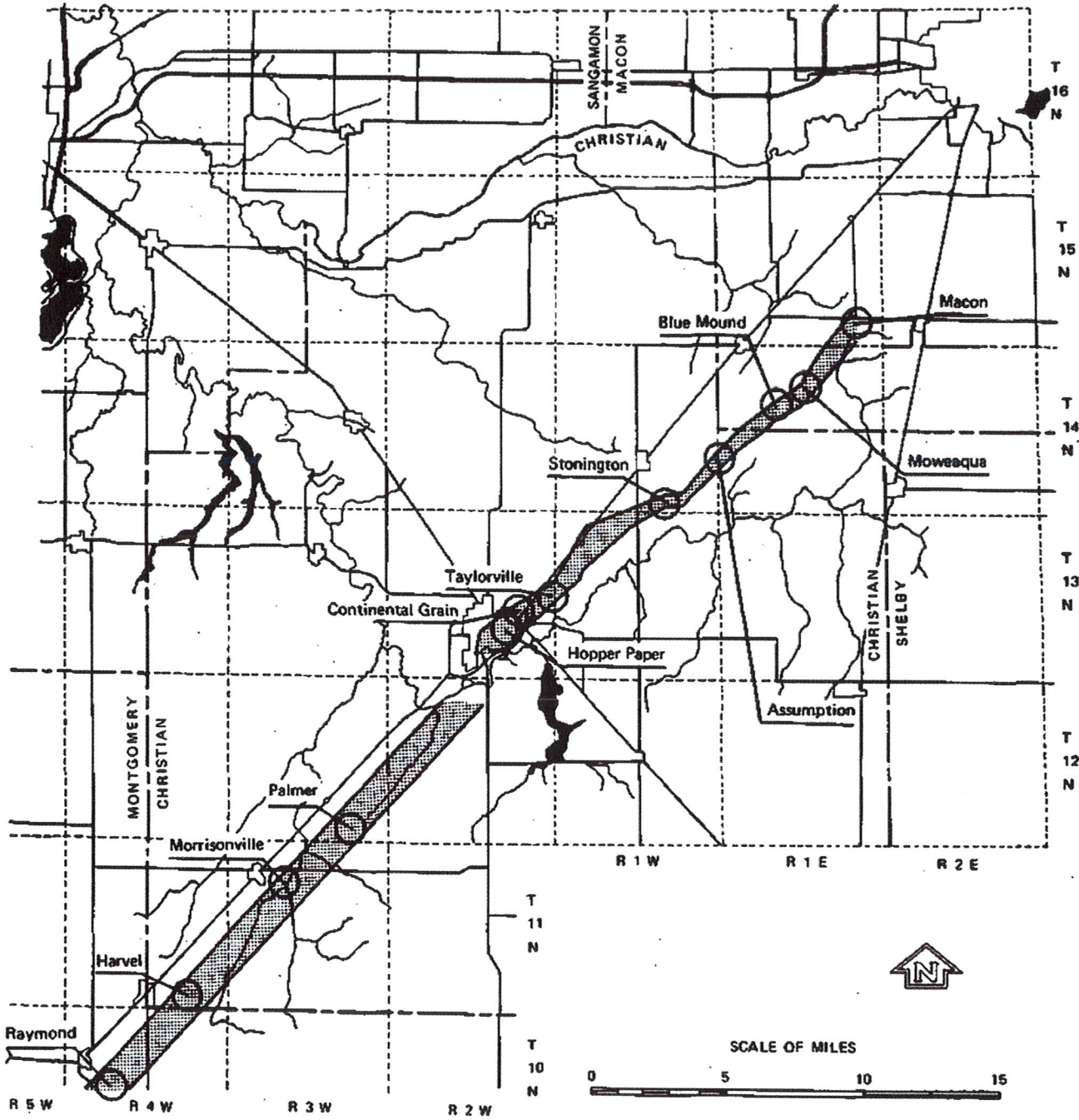


Figure 2. Municipality and well field locations

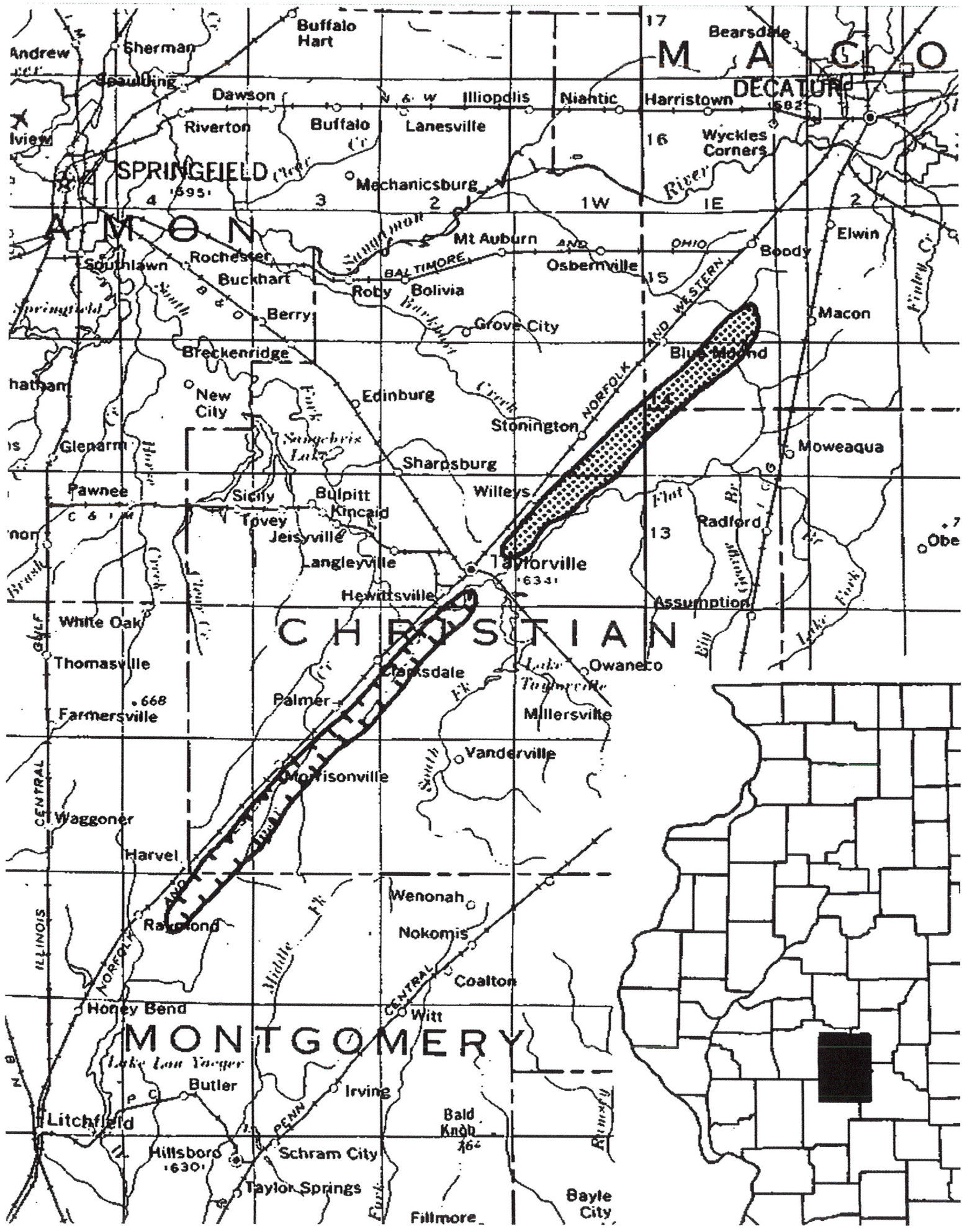


Figure 12.

Groundwater Protection Program Priority CWS Well Watersheds

